

# Community Assessment

This activity will allow members to:

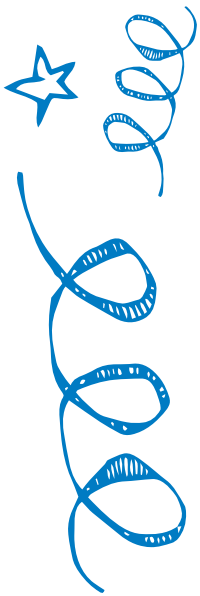
- Practice active listening.
- Collaborate as a team.
- Think through problems to find solutions.

Materials needed:

- One printed worksheet per member. Download it at [kkids.org/IDEA](http://kkids.org/IDEA).
- Pens or pencils

How to lead this activity:

Love to draw? Here's your chance!



1. Ask your club advisor to help find a guest speaker—someone who can talk about what's happening in the community. Share a copy of the Community Assessment worksheet with your guest so he or she can prepare for the talk or presentation.
2. Give each member a Community Assessment worksheet. Members will complete this activity together.
3. On the day of the meeting with your special guest, divide the club into four groups—one for each category on the worksheet.
4. When the guest speaker arrives, introduce yourself, your fellow officers and your club advisors. Thank the speaker for his or her time and participation.
5. While the guest speaker talks about community resources, each group should take notes about their category on the worksheet. When the speaker is finished, applaud. Then thank him or her again.
6. After the speaker leaves, assign members to four groups. Here's how:
  - a. Using numbers 1–4, assign each member a number.
  - b. Or ask members to count off 1–4.
7. Assign each corner of the room to one of the four worksheet categories. Ask members of each numbered group to go to one of the four sections, making sure at least one group member is in each section.
8. Ask members to share what they learned and add new information to their worksheets.
9. When everyone is finished, ask members the following questions as a group:
  - a. What do you love most about your school and/or community?
  - b. What makes your community a great place to live?
  - c. What one thing could your school and/or community do to make it an even better place to live?
10. When the activity is over, thank everyone for their time and participation.

Looking for a tool to help you reflect on what you've learned from others? Check out the "My Observations" activity online at [kkids.org/IDEA](http://kkids.org/IDEA).

# Community Assessment

Your club wants to make a big impact, right? Hear from a guest speaker about your community. Then draw the people, places and things that make your community the place it is.

IMPORTANT BUILDINGS	PARKS AND FUN PLACES
SCHOOLS AND HOSPITALS	LEADERS IN MY COMMUNITY